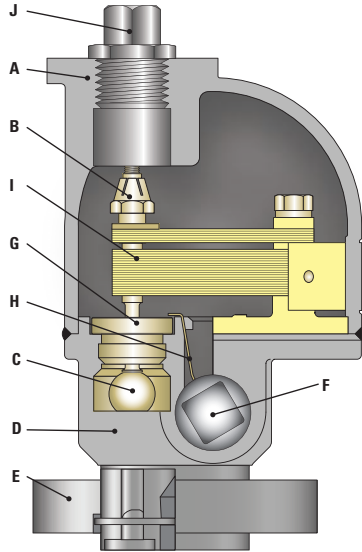


VELAN HERMETICALLY SEALED UST STEAM TRAP



Type
UST

STANDARD MATERIALS

PART	MATERIALS	
A	Cover	Stainless steel CF8M
B	Self locking adjustable nut	Stainless steel
C	Stem and ball	SS, ball valve 58Rc min.
D	Body	Stainless steel CF8M
E	Flange	Stainless steel F316
F	Blowdown plug	Carbon steel electroplated
G	Seat	Stainless steel 316 hardfaced with CoCr alloy
H	Strainer	Stainless steel 304
I	Bimetal element	Truflex GB-14
J	Plug	Carbon steel electroplated

APPLICATIONS

Boiler headers, steam mains, branch lines, tracer lines, sterilizers and finned radiation.

CONNECTIONS:

- Screwed
- Socket-weld

SIMPLE PRINCIPLE OF OPERATION

A single free-floating ball valve:

- Vents air
- Discharges condensate
- Traps steam
- Acts as a check valve

ENGINEERING DATA

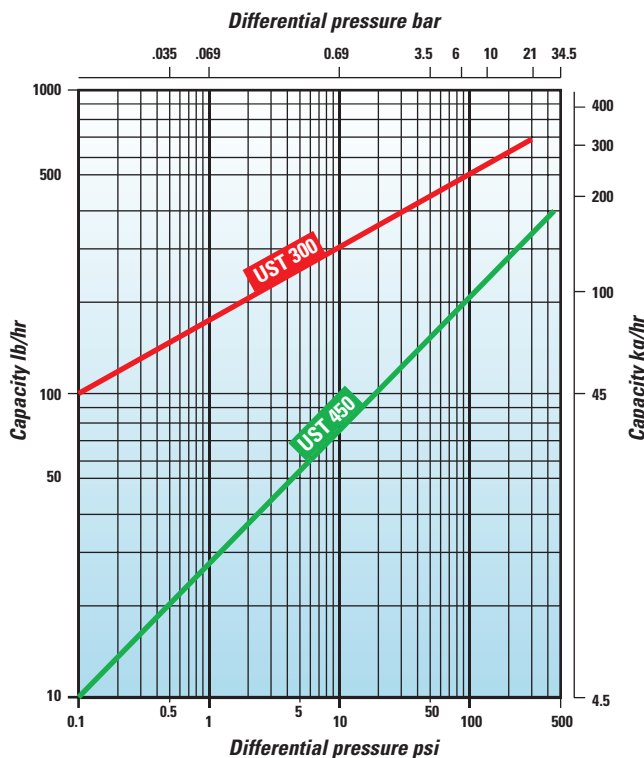
PRESSURE RANGE (1) psig/barg	PMO psig/barg	MATERIAL	MAX TEMP °F/°C	ORIFICE in/mm	MAX CAPACITY lb/hr/kg/hr
0-300 (0-21)	300 (21)	S/S CF8M	600 315	5/16 8	690 315
0-450 (0-31)	450 (31)			1/4 6.4	400 180

(1) Product will operate throughout entire pressure range, however selection closest to the Maximum operating pressure is recommended for maximum efficiency.

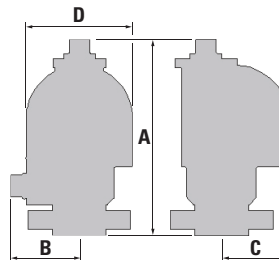
Maximum design condition: ANSI/ASME 300
 PMA = Maximum allowable pressure: 720psig@100°F (50bar@38°C)
 TMA = Maximum allowable temperature: 600°F (315°C) (see note)
 Maximum cold hydrostatic test pressure: 1100psig (75bar)
 TMO = Maximum operating temperature = TMA
 PMO = Maximum operating pressure: (See Engineering data table)

CONDENSATE CAPACITY

The performance graph indicates the continuous discharge capacities of condensate per hour at various pressure differentials across the trap.



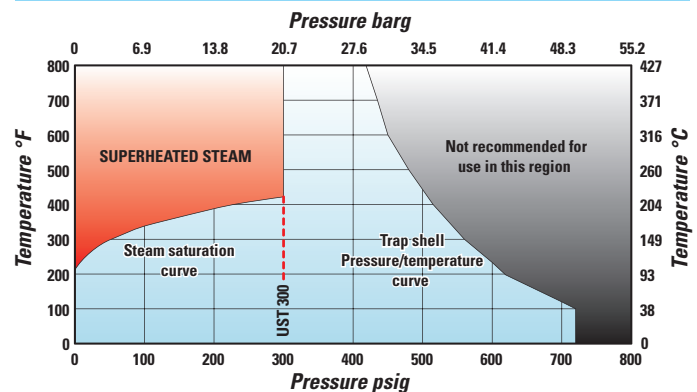
Maximum cold water capacity x 3.5



DIMENSIONS AND WEIGHTS

A OVERALL LENGTH	B CENTER TO B/DOWN PLUG	C CENTER TO TOP OF COVER	D COVER DIAMETER	WEIGHT lb/kg
5 1/8 130	1 7/8 48	1 3/4 45	2 3/4 70	3 1/2 1.5

PRESSURE / TEMPERATURE LIMITS



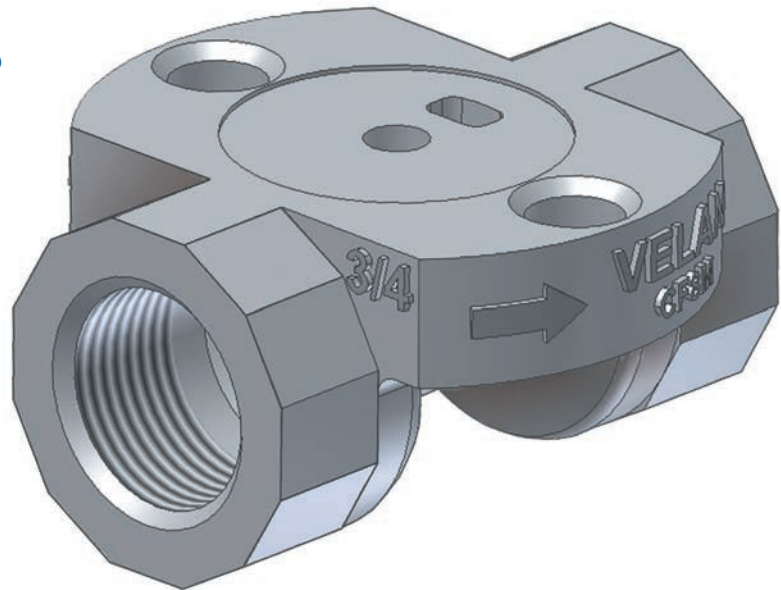
----- Pressure limit for trap type

VELAN CONNECTORS

VELAN CONNECTORS FOR HERMETICALLY SEALED UNIVERSAL STEAM TRAP

Velan connectors are designed to be used with swivel connector steam traps.

The connector can be installed horizontally or vertically into the pipeline. The steam trap is attached to the connector by means of two hexagon screws and can be rotated 360 degrees to ensure the trap is in correct orientation.



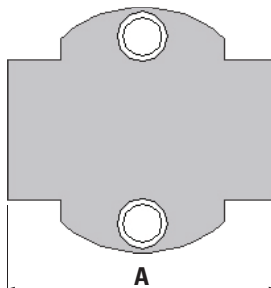
CONNECTIONS

- Screwed
- Socket-weld

ENGINEERING DATA

PRESSURE RANGE psig / barg	MATERIAL	MAX TEMP ⁽¹⁾ °F / °C
0-450 0-31	SS CF8M	600 315

(1) Consult works if the expected service temperature will be >500°F (260°C) as the ferrite level has to be controlled.



DIMENSIONS AND WEIGHTS

SIZE NPS / DN	A FACE TO FACE	WEIGHT lb / kg
1/2 15	2 7/16 62	1.1 0.5
3/4 20	2 7/8 73	1.2 0.55
1 25	3 1/2 89	1.9 0.86

Illustration showing a complete assembly of universal steam trap connector.

